

# Quest

## FILTER HOODS

**T**he Quest Model QLW is Underwriters Laboratory listed with many features that set it apart from any other hood. The U.L./U.L.C. label ensures acceptance by Fire Marshals and City Building Department Officials.

### **SUPERB ADAPTABILITY AND FUNCTION**

The QLW backshelf profile is suitable for counter height cooking appliances and can be used under extremely low ceilings. The QLW filters and interior hood surfaces are very accessible for cleaning. The QLW incorporates a convenient full length plate shelf and can be supplied with an optional fire suppression system and piping cover.

The QLW is approved for use over 600° F cooking appliances at air volumes as low as 200 CFM per lineal foot. This reduces the size of your air handling equipment and ducts while saving energy costs.

The entire hood including plenum and filters is constructed of 300 series Stainless Steel. All external seams are continuously welded liquid tight, ground smooth and polished to a brushed finish.

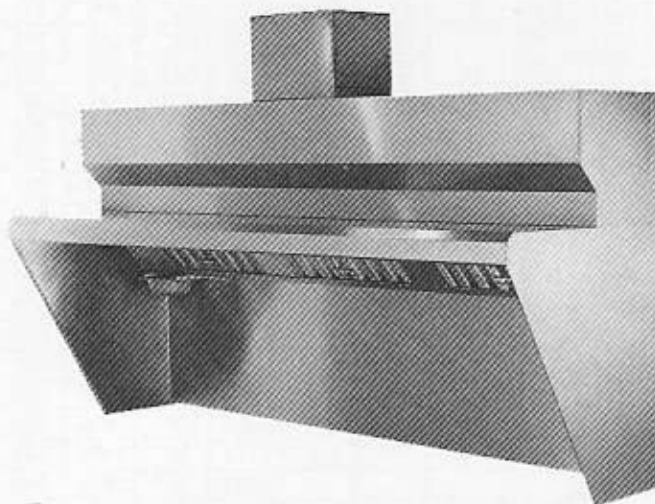
### **HIGH EFFICIENCY AND LOW MAINTENANCE**

Quest Hoods come complete with our exclusive Quest "Fireguard Filters". With their extremely high extraction efficiency, low resistance, and hinge open access, they are clearly the best filter on the market. The QLW is designed to position the filters at a 45° angle back from the plate shelf to a pitched grease trough, where they are handy for removal and give good capture

### **QUALITY DESIGN AND CONSTRUCTION**

The Quest QLW's length is formed from just two sheets of metal with a single full length weld on top. The low height, angling the front apron and forming the filter rack into the hood body makes the QLW extremely easy to clean. There is even a formed-in slot to accept insulated backwall panels.

All these features at an affordable price, backed by over 50 years of Quest engineering, makes Quest Hoods the sensible choice.



## **BACK SHELF HOOD**

### **MODEL QLW**

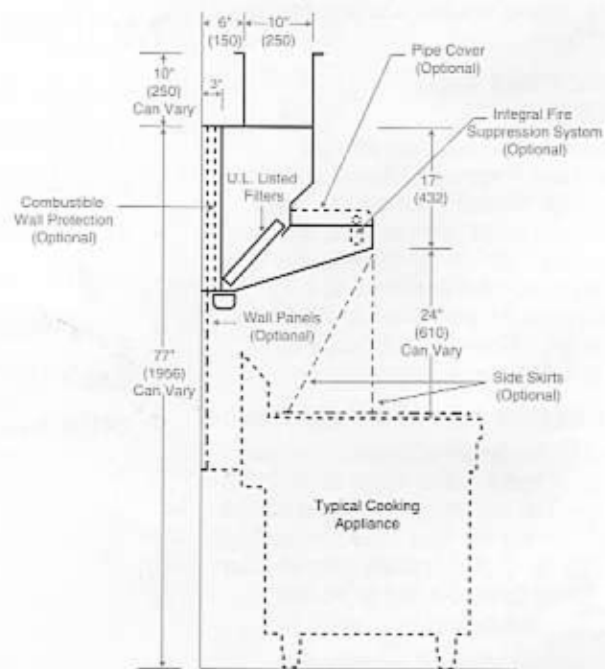
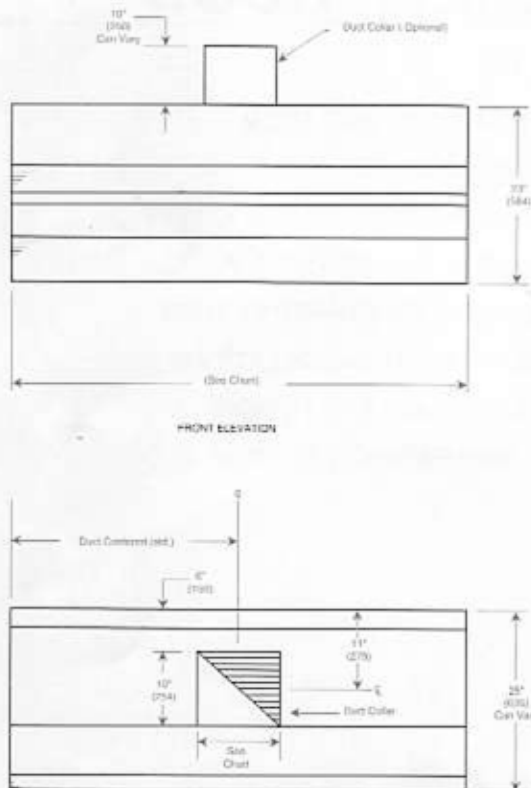
- ULC LISTING ENSURES ACCEPTANCE
- INCORPORATES PLATE SHELF
- LOW AIR VOLUMES REDUCE ENERGY COSTS
- ALL STAINLESS STEEL CONSTRUCTION
- HIGH EFFICIENCY SS "FIREGUARD" FILTERS
- LOW PROFILE SUITS MOST INSTALLATIONS
- EASY TO CLEAN INTERIOR & EXTERIOR
- OPTIONAL FIRE SUPPRESSION SYSTEM



# EXHAUST AIR DUCT SIZING

# QLW ENGINEERING DATA

HOOD LENGTH		EXHAUST FLOW RATE PER FOOT (METRE) OF HOOD LENGTH															
		200 CFM/ft. (310 L/s/M)				250 CFM/ft. (287 L/s/M)				300 CFM/ft. (465 L/s/M)				350 CFM/ft. (542 L/s/M)			
ft	mm	VOL CFM	DUCT 10 x	VOL L/s	DUCT 254 x	VOL CFM	DUCT 10 x	VOL L/s	DUCT 254 x	VOL CFM	DUCT 10 x	VOL L/s	DUCT 254 x	VOL CFM	DUCT 10 x	VOL L/s	DUCT 254 x
3' 0"	914	600	6"	283	152	750	7"	354	178	900	8"	425	203	1050	10"	496	254
3' 6"	1067	700	6"	330	152	875	8"	413	203	1050	10"	496	254	1225	10"	578	254
4' 0"	1219	800	7"	378	178	1000	8"	472	203	1200	10"	566	254	1400	12"	661	305
4' 6"	1372	900	8"	425	203	1125	10"	531	254	1350	12"	637	305	1575	15"	743	381
5' 0"	1524	1000	8"	472	203	1250	12"	590	305	1500	12"	708	305	1750	15"	826	381
5' 6"	1676	1100	10"	519	254	1375	12"	649	305	1650	15"	779	381	1925	18"	909	457
6' 0"	1829	1200	10"	566	254	1500	12"	708	305	1800	15"	850	381	2100	18"	991	457
6' 6"	1981	1300	12"	614	305	1625	15"	767	381	1950	18"	920	457	2275	22"	1074	559
7' 0"	2134	1400	12"	661	305	1750	15"	826	381	2100	18"	991	457	2450	22"	1156	559
7' 6"	2286	1500	12"	708	305	1875	18"	885	457	2250	22"	1062	559	2625	22"	1239	559
8' 0"	2438	1600	15"	755	381	2000	18"	944	457	2400	22"	1133	559	2800	26"	1322	660
8' 6"	2591	1700	15"	802	381	2125	18"	1003	457	2550	22"	1204	559	2975	26"	1404	660
9' 0"	2743	1800	15"	850	381	2250	22"	1062	559	2700	22"	1274	559	3150	26"	1487	660
9' 6"	2896	1900	18"	897	457	2375	22"	1121	559	2850	26"	1345	660	3325	30"	1569	762
10' 0"	3048	2000	18"	944	457	2500	22"	1180	559	3000	26"	1416	660	3500	30"	1652	762
10' 6"	3200	2100	18"	991	457	2625	22"	1239	559	3150	26"	1487	660	3675	36"	1735	914
11' 0"	3353	2200	18"	1038	457	2750	26"	1298	660	3300	30"	1558	762	3850	36"	1817	914
11' 6"	3505	2300	22"	1086	559	2875	26"	1357	660	3450	30"	1628	762	4025	36"	1900	914
12' 0"	3658	2400	22"	1133	559	3000	26"	1416	660	3600	36"	1699	914	4200	36"	1982	914
12' 6"	3810					3125	26"	1475	660	3750	36"	1770	914	4375	36"	2065	914
13' 0"	3962					3250	26"	1534	660	3900	36"	1841	914	4550	42"	2148	1067
13' 6"	4115					3375	30"	1593	762	4050	36"	1912	914	4725	42"	2230	1067
14' 0"	4267					3500	30"	1652	762	4200	36"	1982	914	4900	42"	2313	1067
Static Press.		.55" in WC		.13 kPa		.6" in WC		.15 kPa		.65" in WC		.16 kPa		.75" in WC		.18 kPa	



Note: Dimensions shown above are standard and can be varied upon request.

**Quest** METAL PRODUCTS LIMITED

949 Erin St., Winnipeg, Manitoba R3G 2W6  
Tel: (204) 786-2403 Fax: (204) 783-7598

Distributed in Canada by:

**RUSSELL** Food Equipment

Victoria / Vancouver / Edmonton / Calgary / Regina  
Saskatoon / Winnipeg / Thunder Bay / Sault Ste. Marie  
Toronto / London / Windsor / Ottawa / Montreal / Halifax