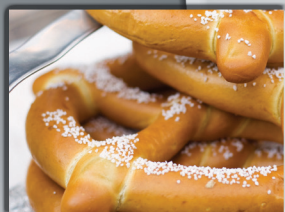


# Multi-Chef™

Cut Your  
Cooking Time  
By Up To  
80%



MULTI-CHEF™ 7500PC Counter Top Model

- **Bakes**
- **Grills**
- **Broils**
- **Toasts**
- **Steams**
- **Roasts**
- **Browns**
- **Sautés**
- **Reheats**
- **Fries** (without oil)

## ***The Ultimate High-Speed All-In-One Cooking System***

Multi-Chef's patented *Rotary Air Impingement™* technology prepares a wide variety of foods in a fraction of the time of traditional convection ovens *without the use of microwave*. From toasting a sub to preparing a juicy steak, baking a pizza or steaming vegetables, Multi-Chef does it all without sacrificing food quality. The Multi-Chef's sealed cooking chamber eliminates the need for hoods and vents allowing it to be installed virtually anywhere.

**800-348-2976**  
**[www.multichef.com](http://www.multichef.com)**



Your source for *innovative* kitchen solutions

# Multi-Chef™

## The Ultimate High-Speed All-In-One Cooking System

### Model 7500 PC



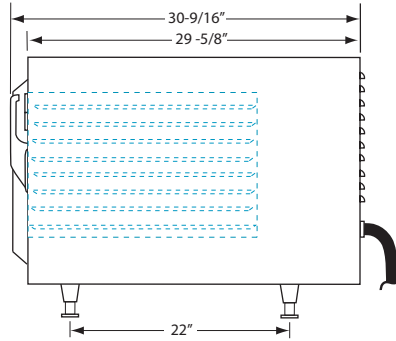
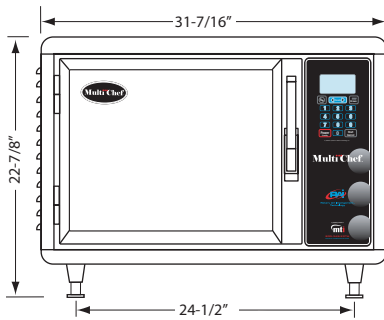
Compare  
These Cook  
Times!



**Reduce Cook Time  
by up to 80%!**

Convection Oven

Multi-Chef Oven



Please Note: Dimension shown do not include 1/4" air louvers on sides and back of oven.

## S P E C I F I C A T I O N S

### CAPACITY SPECIFICATIONS

Cabinet Ext. Dim.:	W = 31-7/16" H = 22-7/8" D = 30-9/16"
Useable Int. Dim.:	Width = 18" Height = 10" Depth = 18"
Cooking Tray Capacity:	18" x 18" Tray — Total 324 Square inches
Useable Cooking Capacity:	Up to 4 Trays — Total 1,296 Square Inches (9 sq. ft.)
Approx. Unit Weight (lbs):	205 lbs.

### ELECTRICAL SPECIFICATIONS

Voltage, Frequency – Phase:	208-240 VAC, 60 Hz – 1 Phase
Amperage:	35.7–39.7 Amps.
Max. Input:	7500–9600 Watts
Cord Length & Plug Type:	6' Cord w/NEMA 6-50 P plug
Cooking Temperature Range:	100° – 500°F
Minimum Wall Clearance:	1" on all sides, 3" in back



### SHIPPING SPECIFICATIONS

Approx. Crated Weight (lbs):	250 lbs.
Approx. Shipping Carton Size:	39" Wide x 38" Deep x 31" High
Approx. Shipping Carton Volume:	21.9 Cu. Ft.

### VENTING REQUIREMENTS

Because of its sealed cooking chamber, the Multi-Chef™ has been engineered and approved to operate safely without a hood and venting system. Check county and local ordinances. Local codes will prevail.

**This product conforms to the ventilation recommendations set forth by NFPA96 and is UL Certified to meet EPA 202 test method.**

### WARRANTY

The Multi-Chef™ is backed by a limited one (1) year parts and labor warranty

- **No Exhaust Hoods or Vents Required**
- **Toast Subs in 30 Seconds**
- **Cooks 18" Frozen Pizza in 2.5 Minutes**
- **4 Tray Cooking Capacity** (Up to four 18" pizzas)
- **Multi-Functional Cooking**
- **Versatile** (Cooks Fresh or Frozen)
- **Cooks Multiple Products at the Same Time**
- **Microwave Free** (accepts metal cookware)
- **Eight Tray Rack Positions**
- **100 Programmable Menu Presets**
- **Space-Saver Design** (fits on a countertop)
- **Energy Saving Stand-by Mode**
- **Easy to Clean** (removable cooking cavity and door)
- **Proudly Made in the USA**

## A C C E S S O R I E S

### INCLUDED WITH THE MULTI-CHEF™

Teflon® Coated Internal Cooking Chamber  
Basket Cooking Tray (18" x 18")  
Commercial Hot Mitt  
Spray Bottle

### OPTIONAL ACCESSORIES

Extra Cooking Trays  
Interior/Exterior Oven Cleaner Spray

version 06.08

# 800-348-2976

[www.multichef.com](http://www.multichef.com)



**Motion Technology, Inc.**

10 Forbes Road • Northborough, MA 01532 • T 508-460-9800 • F 508-393-5750

We reserve the right to change specifications appearing on this bulletin without notice and without incurring any obligation for the equipment previously or subsequently sold.